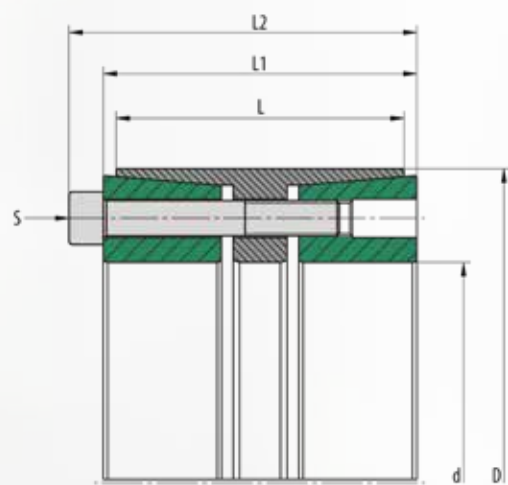
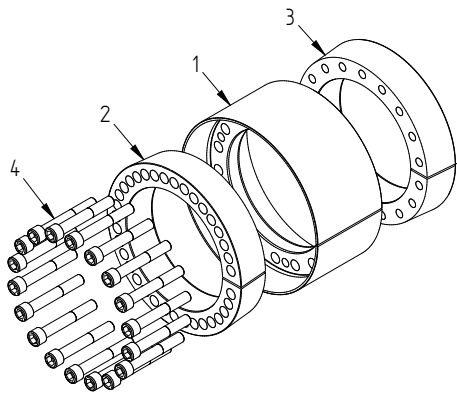


3012 S2 (stainless)



Used symbols

| | | |
|----------|----------------------|--|
| d | [mm] | Shaft diameter |
| D | [mm] | Hub inside diameter |
| M_t | [Nm] | Max. transmittable torque $F_{ax} = 0$ |
| F_{ax} | [kN] | Max. transmittable axial force $M_t = 0$ |
| p_w | [N/mm ²] | Average pressure on the shaft |
| p_N | [N/mm ²] | Average pressure on the hub |
| L | [mm] | Length of the sleeve |
| L_1 | [mm] | Width of the locking device without screws |
| L_2 | [mm] | Width of the locking device with screws |
| Z | | Number of clamping screws |
| S | | Size of the clamping screws |
| M_A | [Nm] | Tightening torque of the clamping screws |



Recommended tolerances & surfaces

| | |
|-------|-----------|
| Shaft | h8 / Rz10 |
| Hub | H8 / Rz10 |

Bending loads

| | |
|------------------------|-------------------------------|
| Bending moment (share) | $M_B \text{ max} = 0,4 * M_t$ |
| Bending angle | max. 5° |

More properties

- low axial displacement during assembly
- very good self-centering
- high self-locking

| Pos. | Benennung |
|------|-----------------|
| 1 | Sleeve |
| 2 | Pressure ring 1 |
| 3 | Pressure ring 2 |
| 4 | Screw |

Ordering information: TAS 3012/d/D S2 (z.B: TAS 3012/150/200 ... further sizes on request)

3012 S2 (stainless)

| <i>d</i> mm | | <i>D</i> mm | <i>M_{max}</i> Nm | <i>F_{ax}</i> kN | <i>p_w</i> N/mm ² | <i>p_N</i> N/mm ² | <i>Z</i> Pcs. | <i>S</i> | <i>M_A</i> Nm | <i>L</i> mm | <i>L₁</i> mm | <i>L₂</i> mm | Class | Weight Kg |
|----------------|---|----------------|------------------------------|-----------------------------|---|---|------------------|-----------|----------------------------|----------------|----------------------------|----------------------------|--------|--------------|
| 25 | x | 50 | 415 | 33 | 95 | 39 | 5 | M6 x 045 | 10,3 | 45 | 53 | 59 | A4-K80 | 0,5 |
| 30 | x | 55 | 598 | 40 | 95 | 43 | 6 | M6 x 045 | 10,3 | 45 | 55 | 61 | A4-K80 | 0,6 |
| 35 | x | 60 | 814 | 46 | 95 | 46 | 7 | M6 x 045 | 10,3 | 45 | 55 | 61 | A4-K80 | 0,7 |
| 38 | x | 65 | 1009 | 53 | 100 | 48 | 8 | M6 x 045 | 10,3 | 45 | 55 | 61 | A4-K80 | 0,8 |
| 40 | x | 65 | 1063 | 53 | 95 | 48 | 8 | M6 x 045 | 10,3 | 45 | 55 | 61 | A4-K80 | 0,7 |
| 45 | x | 75 | 1926 | 86 | 148 | 69 | 7 | M8 x 050 | 25 | 44 | 54 | 62 | A4-K80 | 1,0 |
| 50 | x | 80 | 2446 | 98 | 118 | 58 | 8 | M8 x 050 | 25 | 56 | 64 | 72 | A4-K80 | 1,3 |
| 55 | x | 85 | 3026 | 110 | 121 | 61 | 9 | M8 x 050 | 25 | 56 | 64 | 72 | A4-K80 | 1,5 |
| 60 | x | 90 | 3668 | 122 | 123 | 64 | 10 | M8 x 050 | 25 | 56 | 64 | 72 | A4-K80 | 1,6 |
| 65 | x | 95 | 3974 | 122 | 113 | 61 | 10 | M8 x 050 | 25 | 56 | 64 | 72 | A4-K80 | 1,7 |
| 70 | x | 110 | 6813 | 195 | 132 | 67 | 10 | M10 x 060 | 49,5 | 70 | 78 | 88 | A4-K80 | 3,1 |
| 80 | x | 120 | 8565 | 214 | 127 | 68 | 11 | M10 x 060 | 49,5 | 70 | 78 | 88 | A4-K80 | 3,5 |
| 90 | x | 130 | 10512 | 234 | 123 | 68 | 12 | M10 x 060 | 49,5 | 70 | 78 | 88 | A4-K80 | 3,8 |
| 100 | x | 145 | 15607 | 312 | 118 | 63 | 11 | M12 x 080 | 86 | 90 | 100 | 112 | A4-K80 | 6,1 |
| 110 | x | 155 | 18729 | 341 | 117 | 65 | 12 | M12 x 080 | 86 | 90 | 100 | 112 | A4-K80 | 6,6 |
| 120 | x | 165 | 23836 | 397 | 125 | 71 | 14 | M12 x 080 | 86 | 90 | 100 | 112 | A4-K80 | 7,1 |
| 130 | x | 180 | 30378 | 467 | 114 | 66 | 12 | M14 x 090 | 137 | 104 | 116 | 130 | A4-K80 | 9,9 |
| 140 | x | 190 | 38167 | 545 | 123 | 73 | 14 | M14 x 090 | 137 | 104 | 116 | 130 | A4-K80 | 10,6 |
| 150 | x | 200 | 43814 | 584 | 123 | 75 | 15 | M14 x 090 | 137 | 104 | 116 | 130 | A4-K80 | 11,2 |
| 160 | x | 210 | 49851 | 623 | 123 | 76 | 16 | M14 x 090 | 137 | 104 | 118 | 132 | A4-K80 | 11,9 |
| 170 | x | 225 | 63589 | 748 | 106 | 66 | 14 | M16 x 110 | 212 | 134 | 146 | 162 | A4-K80 | 17,9 |
| 180 | x | 235 | 72139 | 802 | 107 | 68 | 15 | M16 x 110 | 212 | 134 | 146 | 162 | A4-K80 | 18,9 |
| 190 | x | 250 | 81223 | 855 | 109 | 68 | 16 | M16 x 110 | 212 | 134 | 146 | 162 | A4-K80 | 21,8 |
| 200 | x | 260 | 85498 | 855 | 103 | 65 | 16 | M16 x 110 | 212 | 134 | 146 | 162 | A4-K80 | 22,8 |
| 220 | x | 285 | 105804 | 962 | 105 | 67 | 18 | M16 x 110 | 212 | 134 | 146 | 162 | A4-K80 | 27,1 |
| 240 | x | 305 | 128248 | 1069 | 107 | 69 | 20 | M16 x 110 | 212 | 134 | 146 | 162 | A4-K80 | 29,3 |